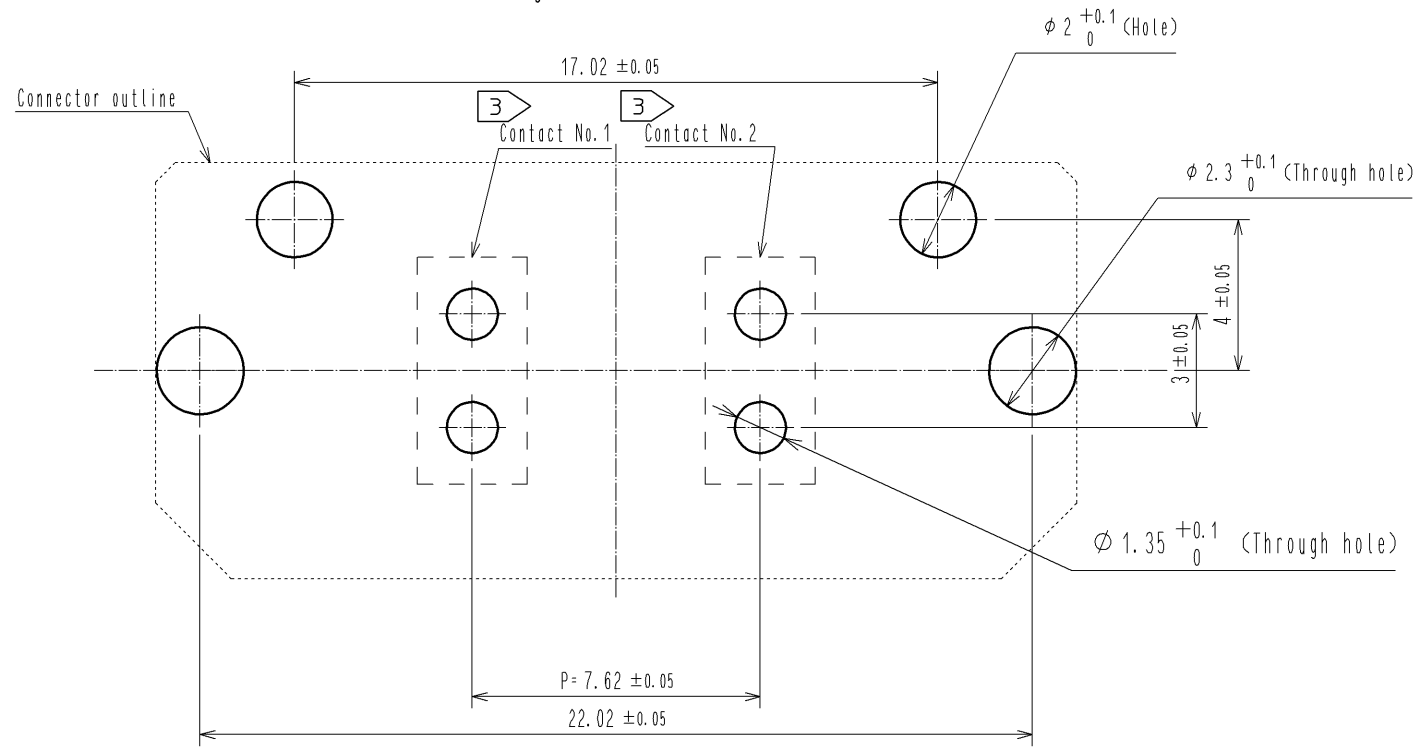


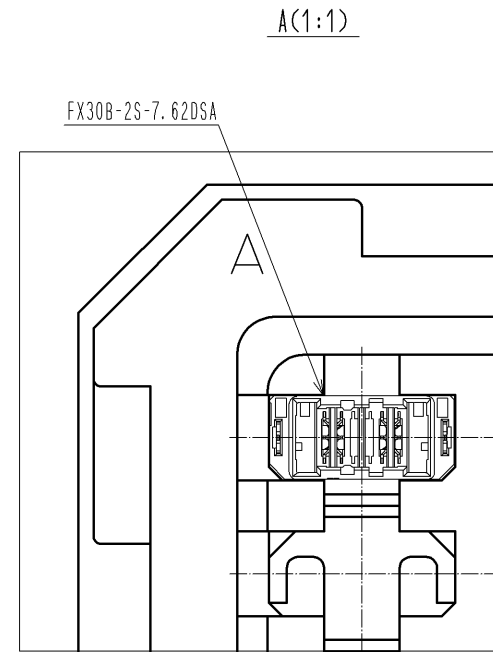
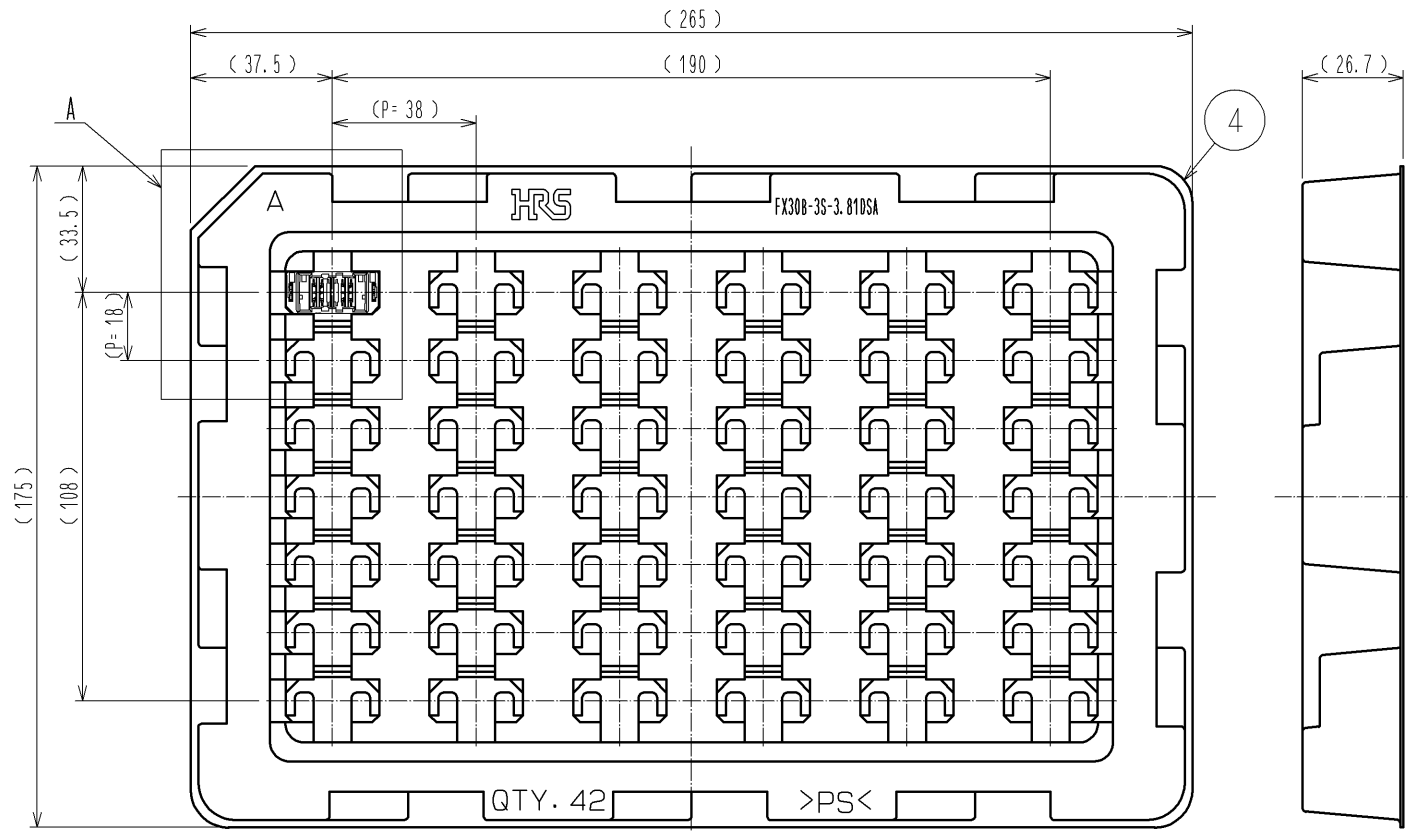
- NOTE
- ① This product is packaged in tray. (42pcs/tray)
 - ② Blemish and hit mark can be occurred through out the manufacturing process which doesn't affect quality level. Also, black spot could be observed on the surface of housing.
 - ③ For the contact NO., adjacent two pairs of leads placed back-to-back (4 leads in total) Compose one line.
 - ④ Misalignment absorbing range: ± 0.3mm max.
 - ⑤ The dimension in parentheses are for references.
 - ⑥ Lot NO. is indicated at either one of the position as shown.

2	Copper alloy	Contact area: Gold-plating 0.1 μm Lead area: Tin-plating 1.0 μm Under plating: Nickel 1.0 μm	4	Polystyrene	
1	Polyamide	Black UL94V-0	3	Phosphor bronze	Tin-plating 3.0 μm Under plating: Nickel 1.0 μm
NO.	MATERIAL	FINISH . REMARKS	NO.	MATERIAL	FINISH . REMARKS
UNITS mm		SCALE 2 : 1	COUNT 	DESCRIPTION OF REVISIONS	
DESIGNED		CHECKED		DATE	
APPROVED : HS. OKAWA 14.09.12			DRAWING NO. EDC3-359165-00		
CHECED : KN. SHIBUYA 14.09.12			PART NO. FX30B-2S-7.62DSA		
DESIGNED : DK. AIMOTO 14.09.12			CODE NO. CL570-3504-2-00		
DRAWN : DK. AIMOTO 14.09.12			1/2		

Recommended hole pattern dimension of PCB(5:1)
 (Connector mounting side, PCB thickness: t=1.6mm)



1 Drawing for packaging(1:2)



HRS	DRAWING NO.	EDC3-359165-00	△ 2/2
	PART NO.	FX30B-2S-7.62DSA	
	CODE NO.	CL570-3504-2-00	